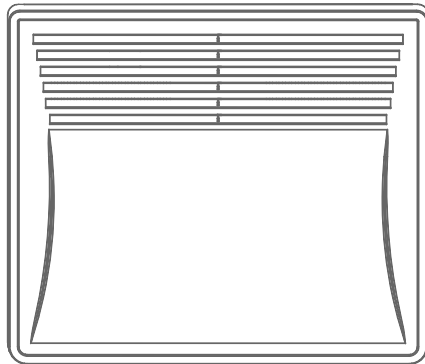




INSTRUCTION MANUAL

Delux Eco Smart Digital Panel Heater



Introduction

Models covered by this instruction sheet:-

DXP1000S 1kW & DXP2000S 2kW Delux Eco Smart Digital Panel Heaters



IMPORTANT Read these instructions fully before using the appliance.
Retain these instructions for future reference.

NOTE The appliance may only be used in a fixed position and only for the purpose described. It is not for outdoor use!

The rating of this product (as marked on the product identification plate) is based on specific loading tests. Normal use or the use of other recommended attachments may draw significantly less power.

SAFETY INSTRUCTIONS

Please read these instructions before operating the appliance.

- Use only the voltage specified on the rating plate of the heater.
- Do not cover or restrict airflow to the inlet or exhaust grilles in any manner as the appliance may overheat and become a fire risk.
- Do not cover grilles, block entry or exhaust of airflow by placing appliance against any surface. Keep all objects at least 1 metre from the appliance.
- Do not place the appliance close to a radiant heat source.
- Do not operate in areas where gasoline, paint or other flammable liquids are used or stored.
- This appliance heats up when in use. To avoid burns, do not let bare skin touch any hot surfaces. Switch off and leave to cool before moving.
- Do not use the appliance to dry clothes.
- Do not insert or allow foreign object or metal utensils to enter any ventilation or exhaust opening. This may cause an electric shock, fire or damage to the appliance.
- Do not immerse in liquid or allow liquid to run into the interior of the appliance, as this could create an electrical shock hazard.
- Do not reach for an appliance that has fallen into water. Switch off at the power supply and unplug immediately.
- Do not operate any appliance with a damaged cord, plug or after the appliance malfunctions or has been dropped or damaged in any manner.

- Return to a qualified electrical professional for examination, electrical or mechanical adjustment, service or repair.
- Do not operate appliance with wet hands.
- The most common cause of overheating is deposits of dust or fluff in the appliance. Ensure these deposits are removed regularly by isolating power to the appliance and vacuum cleaning air vents and grilles.
- Do not use this appliance in a window as rain may cause electric shock.
- Do not use abrasive cleaning products on this appliance. Clean with a damp cloth (not wet) rinsed in hot soapy water only. Switch off at the power supply before cleaning.
- Do not connect the appliance to the mains voltage until completely assembled and adjusted.
- This appliance is not intended for use in outdoor locations.
- Do not use this appliance in the immediate surrounds of a bath, shower or swimming pool. IP24 rating requires installation at a minimum of 0.6 metres from any water source.
- Always operate upright.
- Do not operate with cord set coiled up as a build up of heat is likely.
- The use of an extension cord with this appliance is not recommended.
- Do not remove plug from power socket until the appliance has been switched off.
- Do not remove plug from power socket by pulling the supply cord - always grip the plug.
- Do not allow cord to come in contact with heated surface during operation.
- Do not run cord under carpeting, throw rugs or runners etc. Arrange cord away from traffic areas so that it will not be tripped over.
- Do not twist, kink or wrap the cord around the appliance, as this may cause the insulation to weaken and split. Always ensure that all cord has been removed from any cord storage area.
- Do not store appliance while it is still hot.
- This appliance is not intended for use by persons (including children) with reduced physical, sensory or mental capabilities, or lack of experience and knowledge, unless they have been given supervision or instruction concerning use of the appliance by a person responsible for their safety. Children should be supervised to ensure that they do not play with the appliance.
- The appliance must not be located immediately below a socket outlet.
- Do not use this appliance with another programmer, timer or any other device that switches the heater on automatically.
- All covers for this appliance are intended to prevent direct access to the heating elements and must be in place when the appliance is in use.

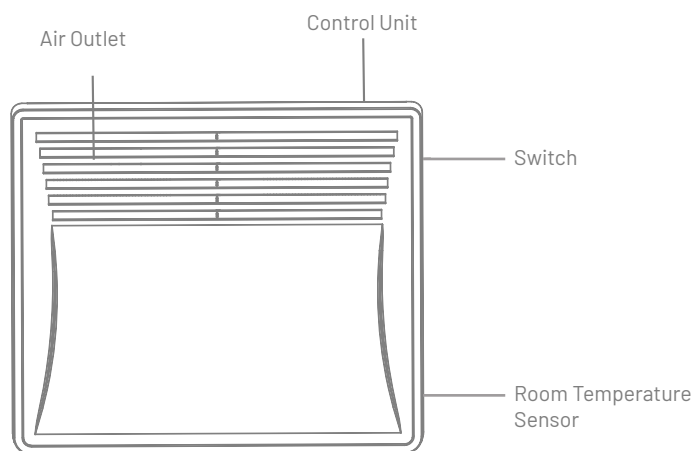
- **WARNING:** In order to avoid overloading and discolouration, do not cover the heater.
- To reduce the risk of electric shock, do not immerse or expose the product or flexible cord to rain, moisture or any liquid other than those necessary for correct operation of the product.
- Electrical installation must be carried out by a qualified professional in accordance with the latest edition of the IEE wiring regulations.
- If the supply cord is damaged, it must be replaced by a qualified professional in order to avoid a hazard.
- Use this appliance only as described in this manual. Any other use is not recommended by the manufacturer and may cause fire, electric shock or injury.
- Discolouration of unit indicates excess dust build up and/or unit being covered by damp materials. We highly recommend the appliance is cleaned on a regular basis. Discolouration is not covered by the warranty.

Specification

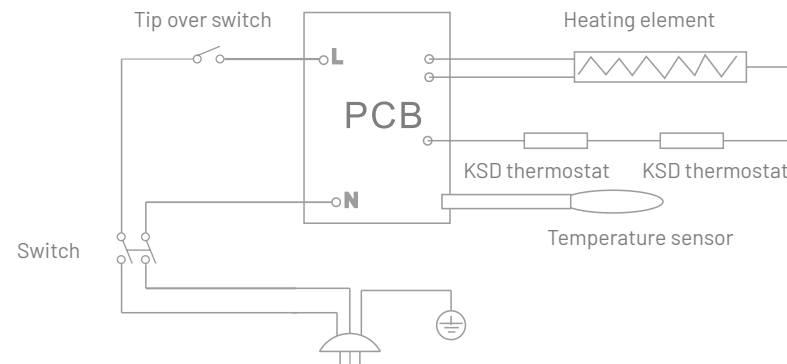
Model Number	DXP1000S	DXP2000S
Rated Power	500W/1000W	1000W/2000W
Rated Voltage	220-240V~ 50Hz	
Dimensions (mm)	460*90*400	830*90*400

Drawing

Fig. 1



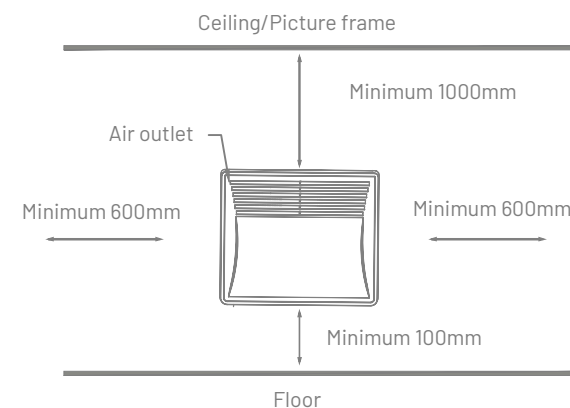
Circuit Diagram



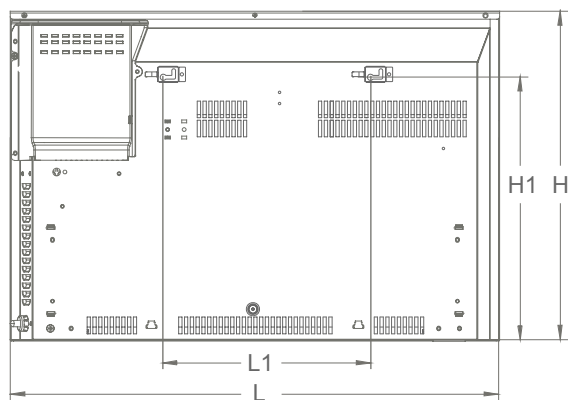
Heater Position



This heater **MUST** be installed to the minimum required distances at the four sides of the heater.

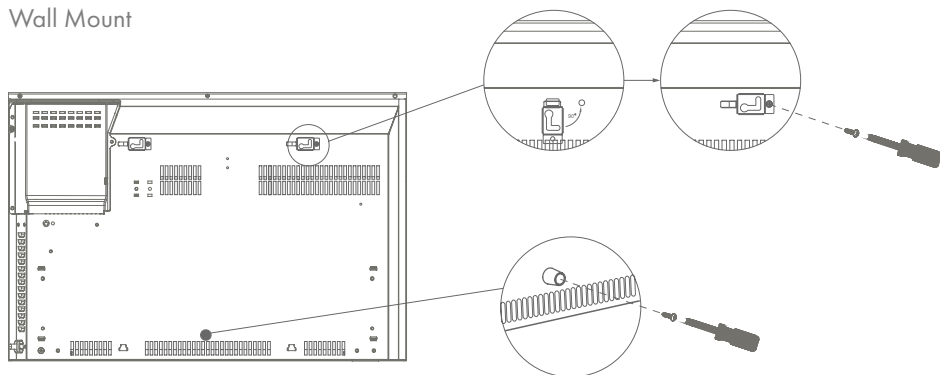


MOUNTING GUIDE

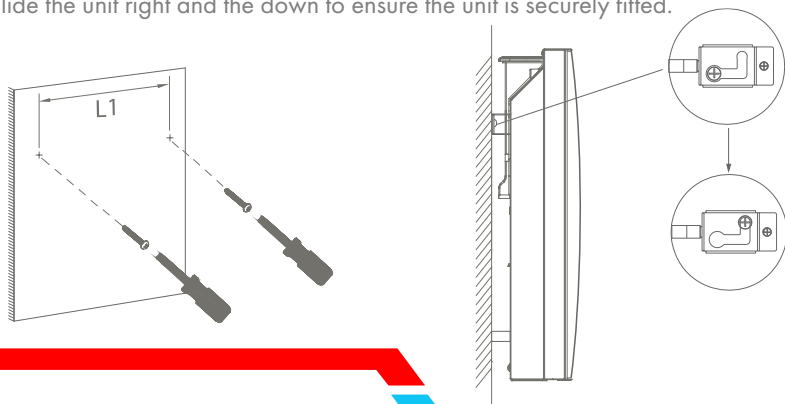


Model Number	Power W	L	H	L1	H1
DXP1000S	1000/500	460	400	155	317
DXP2000S	2000/1000	830	400	250	317

Wall Mount

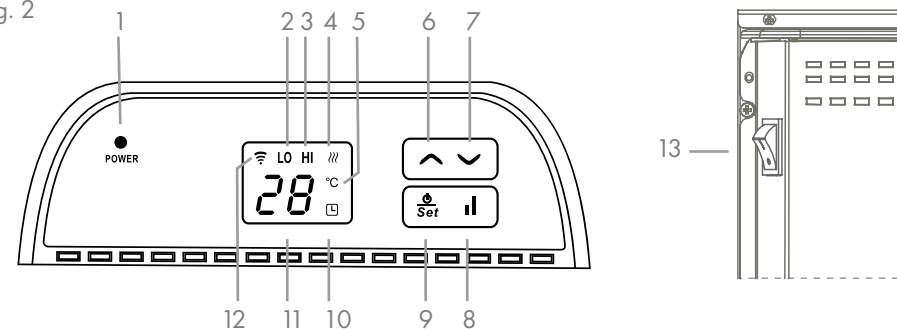


1. Insert the supplied bracket into the hole, turn it anticlockwise 90°, fasten it with screw;
2. Push the supplied rubber pad in the hole and fasten in with screw.
3. Hook the unit onto the mounting screws
4. Slide the unit right and the down to ensure the unit is securely fitted.



CONTROL PANEL

Fig. 2



Guide to the control panel

1. Power Indicator
2. Low Heat Indicator (LO)
3. High Heat Indicator (HI)
4. Heating Indicator
5. Temperature Measure
6. Upward Adjustment Button
7. Downward Adjustment Button
8. Select Full/Half Capacity Heat Mode
9. Power/Set Button
10. Timer Indicator
11. Temperature
12. Wi-Fi Indicator
13. Power Switch

OPERATION - Connection to Wi-Fi and Smartlife/TUYA app is required to set weekly scheduled timer operation. See pages 10-11.

- Remove heater from the carton carefully.
- Make sure the power switch (13) is in the OFF position before connecting the appliance to the power supply.
- Ensure the heater is correctly mounted to the wall.
- It is better not to use the same electric outlet with other high wattage electrical appliances in order to avoid overloading your circuit.

POWER ON

- When the product is connected to the power supply, the power indicator (1) will illuminate and the Wi-Fi indicator (12) will begin to flash.
- Press the power button (9) to switch the unit on.

POWER OFF

- Hold the power button (9) for three seconds to switch the unit off.

HALF POWER AND FULL POWER SELECTION

- Press the heating power button (8) to change the power to partial or full load.

- At full heating capacity, "HI" (3) is shown on the display and the half heating capacity "LO" (2) is deactivated.
- In the case of partial capacity heating, "LO" (2) is activated on the display and "HI" (3) is deactivated.

WIFI RESET

- Hold the heat capacity button (8) for 5 seconds to re-set the Wi-Fi.

Bluetooth connection requirements

- Ensure the Bluetooth function is activated on the mobile phone.
- The user must be in proximity of the heater.
- If the network becomes bad or the phone cannot be controlled by Wi-Fi, wait for 3-5 minutes for the device to connect to Bluetooth to continue operation.

SETTING THE TEMPERATURE

- The unit of measure for the target temperature is °C.
- Press the Power/Set button (9), and then select a temperature using the up (6) and down (7) buttons. The temperature range is between 5 and 45°C.
- If no action is taken for 10 seconds after the setting is completed, the system automatically saves the setting and exits the menu.

SETTING THE TIMER 24 HOUR SHUTDOWN

- Press the Power/Set button (9) twice then use the up (6) and down (7) buttons to select a shut down timer within 24 hours.
- When a timer is set the Timer Indicator (10) will illuminate.

OPEN WINDOW DETECTION

- When the heater is in operation it is automatically in open window detection mode and will shut down if the ambient temperature rapidly falls below 3 degrees or more.

SIGNAL SOUND

- An acoustic signal sounds each time a key is pressed on the unit. If a button is held continuously the unit will only signal once.

CHILD LOCK

- When the unit is in operation, press the up (6) and down (7) buttons simultaneously for 3 seconds. The control panel will now be locked.

UNLOCK CHILD LOCK

- Press the up (6) and down (7) buttons simultaneously for 3 seconds.

CLEANING INSTRUCTIONS

Cleaning behind the heater

It is very easy to clean behind it. Holding both sides of the heater, lift upwards and then pull forwards. The heater requires regular cleaning, to ensure trouble-free operation:

- Isolate the power supply to the heater before cleaning.
- Ensure that the heater has been allowed to cool down completely before cleaning.
- Use a damp cloth (not wet) to wipe the exterior of the heater to remove dust and dirt.
- Use a vacuum cleaner to remove dust and fluff from around the grilles. (Failure to do this may cause discolouration)
- Ensure the heater is dry before connecting back into the mains supply.

WARRANTY

1. This product is guaranteed for a period of 2 years from the date of purchase against faulty components and manufacturing defects.
2. This warranty does not cover wear and tear, or misuse and abuse. Transportation, freight cost and labour costs are excluded.
3. Before taking any action in the event of a fault, contact our customer service team who will assist you. The products serial number and proof of purchase must be provided.

In the event of a faulty product, deXpro will replace faulty parts or at its sole discretion replace the product.

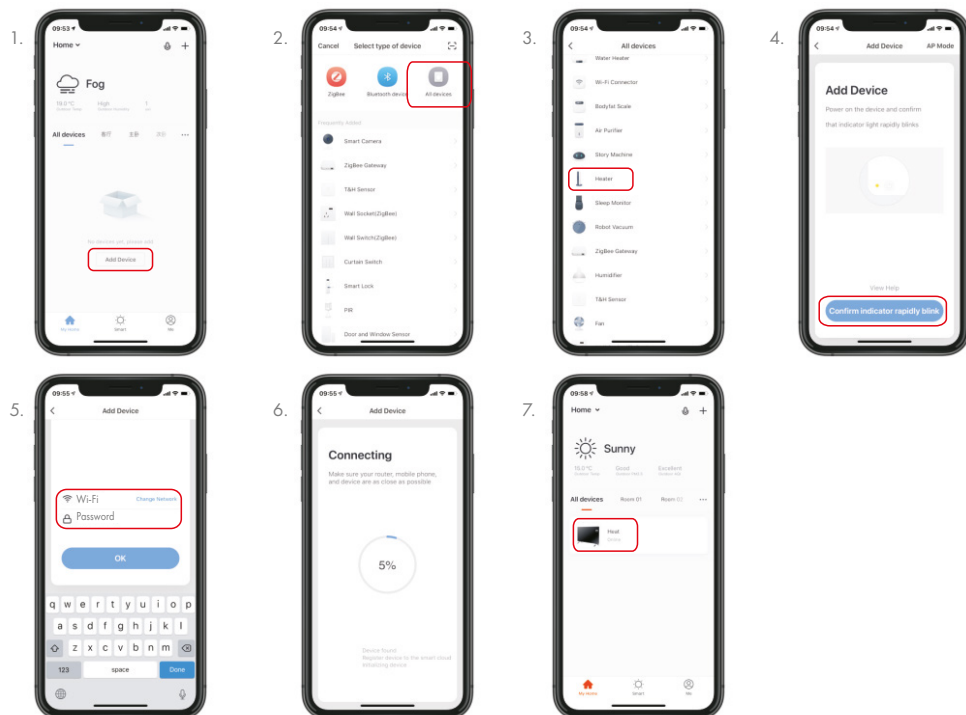
APP

Users can use mobile phone scanning the QR code to download APP.

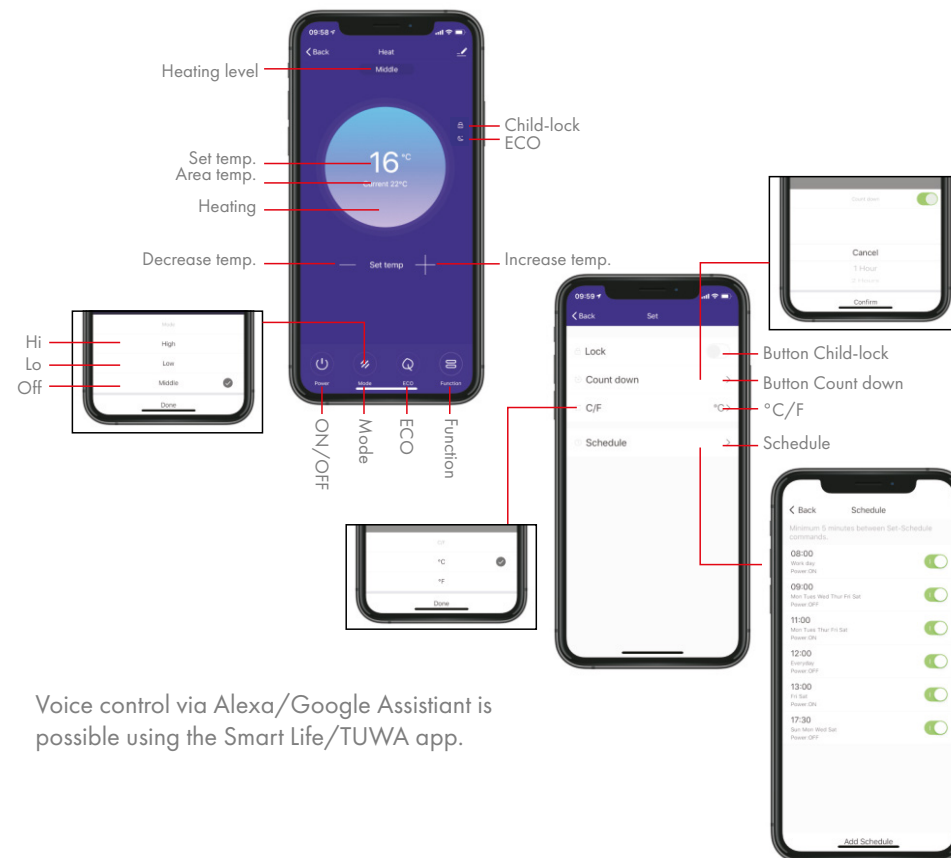


CONNECTING THE HEATER

Open app, fill in required user details then follow the steps on screen. Select add device > all devices > heater > confirm connection > enter Wi-Fi password > confirm, then heater is connected. If connection fails, press heater panel button 1 for 3 seconds to reset the heater, then reset Wi-Fi by holding button 8 for 5 seconds and try to connect again. It is recommended to change your Wi-Fi frequency to 2.4ghz to successfully connect.



USING THE APP



Voice control via Alexa/Google Assistant is possible using the Smart Life/TUWA app.

INFORMATION FOR CORRECT DISPOSAL OF THE PRODUCT IN ACCORDANCE WITH THE EUROPEAN DIRECTIVE 2002/96/E.



At the end of its working life this equipment must not be disposed of as household waste. It must be taken to a local authority waste collection centre or to a dealer providing this service. Disposing of electrical and electronic equipment separately enables its components to be recovered and recycled to obtain significant savings in energy and resources. In order to underline the duty to dispose of this equipment separately, the product is marked with a crossed out dustbin.

